



# TOYOTA Technical Service BULLETIN

August 4, 2005

Title:

## REAR DISC BRAKE PAD INSTALLATION

Models:

'00 – '05 Celica, '03 – '05 Matrix, &  
'04 – '05 Corolla

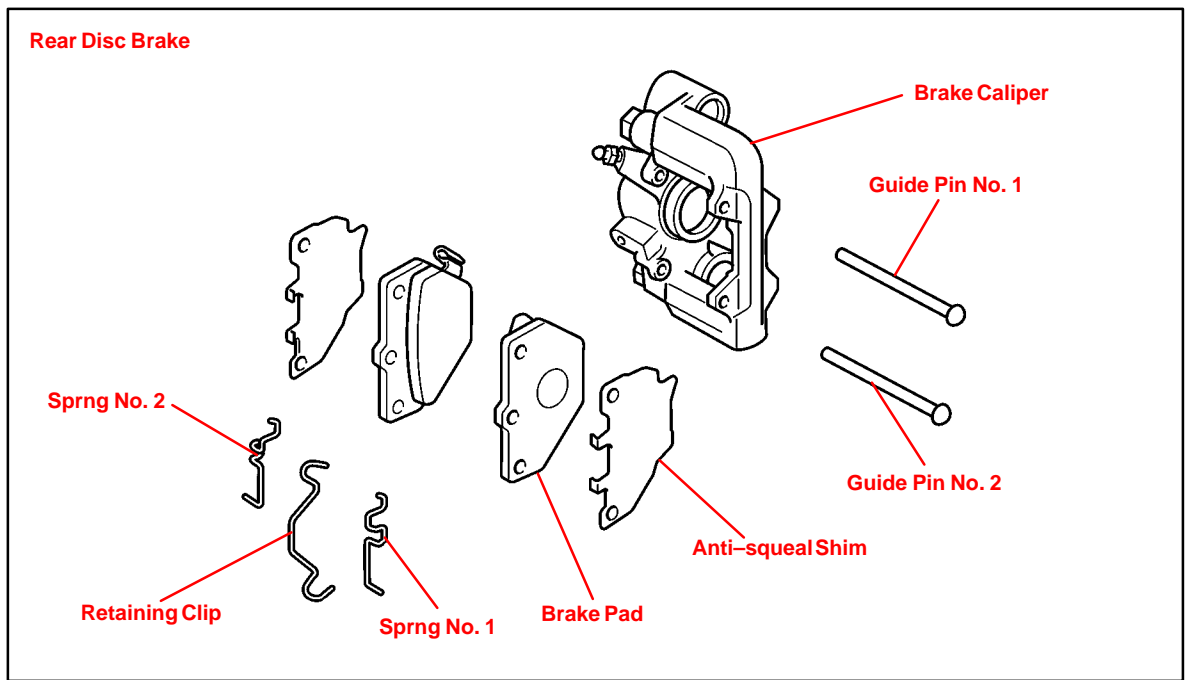
BR005-05  
BRAKES

**Introduction** The procedure outlined in this bulletin is being provided as a service tip for the replacement of rear brake pads and retaining clip.

For complete details on brake pad replacement and caliper service, refer to the Technical Information System (TIS), applicable model year vehicle Repair Manual.

- Applicable Vehicles**
- 2000 – 2005 model year **Celica** vehicles.
  - 2003 – 2005 model year **Matrix** vehicles.
  - 2004 – 2005 model year **Corolla** vehicles.

### Components



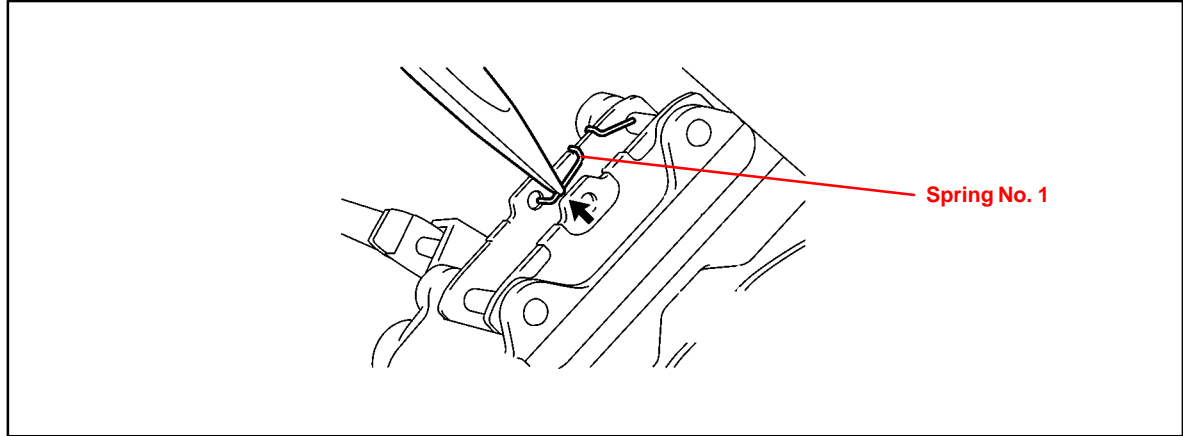
### Warranty Information

OP CODE	DESCRIPTION	TIME	OFF	T1	T2
N/A	Not Applicable to Warranty	–	–	–	–

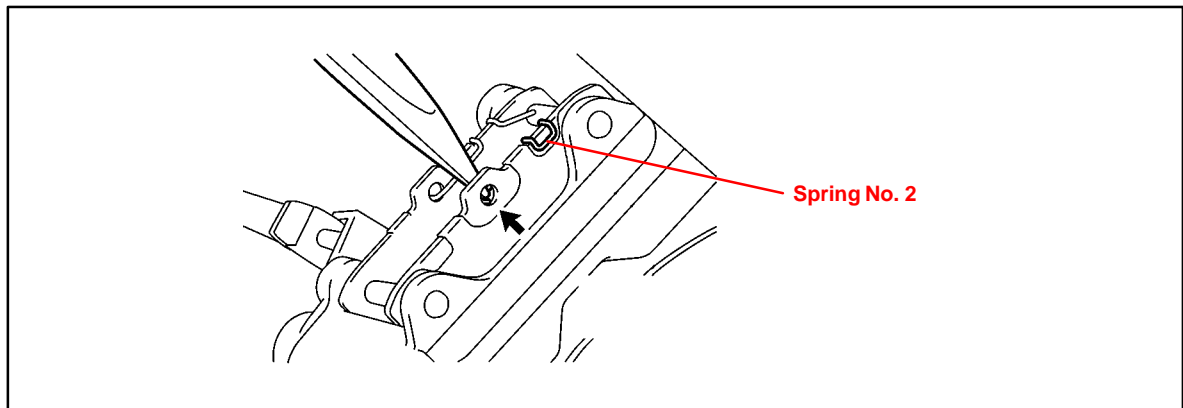


**Repair  
Procedure**

1. Install the brake pads.
  - A. Install the two brake pads with the anti-squeal shims to the brake caliper.
  - B. Install the two (2) guide pins to fix the brake pads.
2. Install spring No. 1.
  - A. Hook the spring upper portion to guide pin No. 1.



- B. Hook the spring lower portion to the center hole of the brake pad.
3. Install spring No. 2.
  - A. Hook the spring upper portion to guide pin No. 1.



- B. Hook the spring lower portion to the center hole of the brake pad.

**Repair  
Procedure**  
(Continued)

4. Secure the guide pins with the retaining clip.
  - A. Insert the retaining clip end into the hole of guide pin No. 1.
  - B. Insert the other clip end into the hole of guide pin No. 2.

**NOTE:**

The retaining clip should be fully inserted into guide pin No. 1 and No. 2.  
If NOT, the guide pins will come off and the brake caliper will be damaged.

